



WE WANT A SOCIETY WHERE EVERYONE CAN ENJOY THE SAME RIGHTS AND OPPORTUNITIES

**Our purpose**  
(why we exist):

In partnership with others, we identify and share best practice to help build a more inclusive society. We seek to empower and enable people to thrive.



**Our mission**  
(what we do):

For 50 years, we have protected and supported the rights of people with learning disabilities, to build a more fair and equal society, where everyone has the same opportunities.

We work with people with lived experience to support organisations and their staff to build a more inclusive society that empowers and enables people to thrive.



**How do we do this?**

We identify best practice and what works by working in partnership with people with learning disabilities as well as drawing from research evidence.

We share best practice to raise awareness and improve understanding by working in partnership with people with learning disabilities and organisations and individuals that support them.



**Where do we work?**

We work in Britain and Ireland and also have partners in other countries, including Spain, Australia and New Zealand.

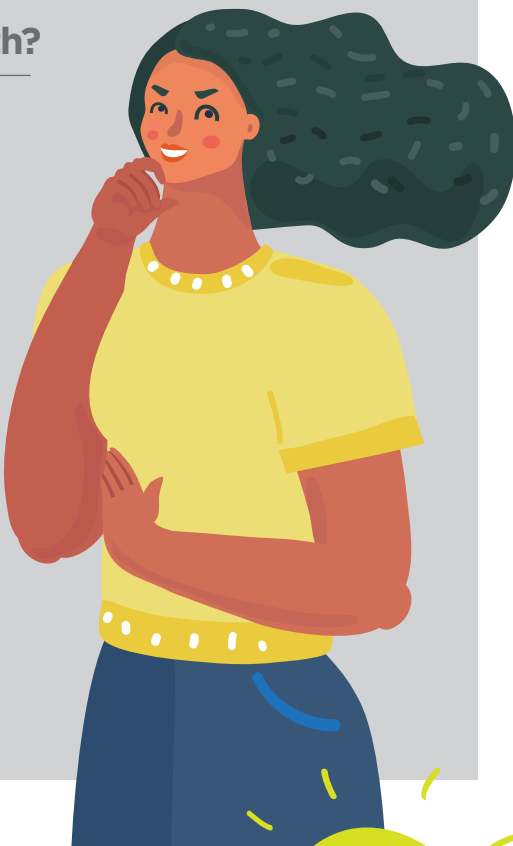


**Who do we work in partnership with?**

We work in partnership with our members, people with lived experience, experts, organisations that provide care and support, NHS trusts and government departments.

**Who are we here to support**  
(our beneficiaries)?

We improve the lives of people with learning disabilities – including people who also have autism, mental health conditions or dementia.



## How we make a difference (our impact)



## We believe in:

- C COLLABORATION**  
Working together
- H HUMAN RIGHTS**  
Championing people's rights
- O OPPORTUNITIES**  
Equal opportunities for all
- I INCLUSION**  
A society that includes everybody
- C CHOICE**  
People choosing and controlling their own lives
- E ENABLING**  
Enable and empower people to thrive



## What we value (how we behave)

Four important values guide everything we do, and how we behave:



- Enable**  
We are a human rights based charity. Our work aims to help build a more inclusive and diverse society that empowers and enables everyone to choose how they live.
- Collaboration**  
We believe that the world is better when we all work together, and when nobody is left out. That is why we always listen to – and work with – our members; including people with lived experience, experts, organisations that provide care and support, NHS trusts, and government departments to maximise our impact in improving practice.
- Knowledge**  
We actively seek and share knowledge of what works that is evidence-based from both research and from people with lived experience. We are trusted, independent and reliable. We promote what works to improve lives.
- Solutions**  
We seek to find solutions that bring about a positive and lasting impact. We adopt a strengths-based approach and system and practice leadership to build positive cultures.

