



Department
of Health



Winterbourne View Concordat Signatories Event

5th June 2013

Church House Conference Centre



Department
of Health



Purpose:

To bring together all the signatories to the Winterbourne View Concordat and the members of the NHS England/LGA Winterbourne View Joint Improvement Board to assess and discuss:

Developing outline of national Winterbourne View Joint Improvement Programme

Action taken by signatories so far and progress made

Explore and develop linkages and delivery options

Further planned action from individual signatories

Contribute to the priorities of the Winterbourne View Joint Improvement Programme



Department
of Health



Chris Bull
**Chair Winterbourne View Joint
Improvement Board**



Department
of Health



Jon Rouse
Director General for Social Care,
Local Government and Care
Partnerships, Department of Health



Department
of Health



Norman Lamb MP
Minister of State for Care and
Support



Department
of Health



Questions and Discussion



Department
of Health



Session 1 – What have we done so far



Department
of Health



Lunch



Department
of Health



Session 2 – Coming out of the silo



Department
of Health



Session 3 – Links and Opportunities



Towards Excellence in Adult Social Care

**Sandie Keene,
Chair, Towards Excellence in Adult Social Care
Programme Board
and President of ADASS**

October 2012



What is sector led improvement in adult social care?

- **Key principles**
- Councils are responsible for their performance
- Councils are accountable to local citizens
- Councils have a collective responsibility
- **How is this achieved?**
- Challenge from one's peers
- Good information and local accounts
- Self evaluation and regional work
- Managing the risk of underperformance



Links to Winterbourne View Joint Improvement Programme

- **Key links**
- Focus on commissioners
- Focus on quality
- Focus on the local
- New joint peer challenge
- **Related activity**
- ADASS market development work
- New LGA programme on Health and Wellbeing Boards and Integration Pioneers

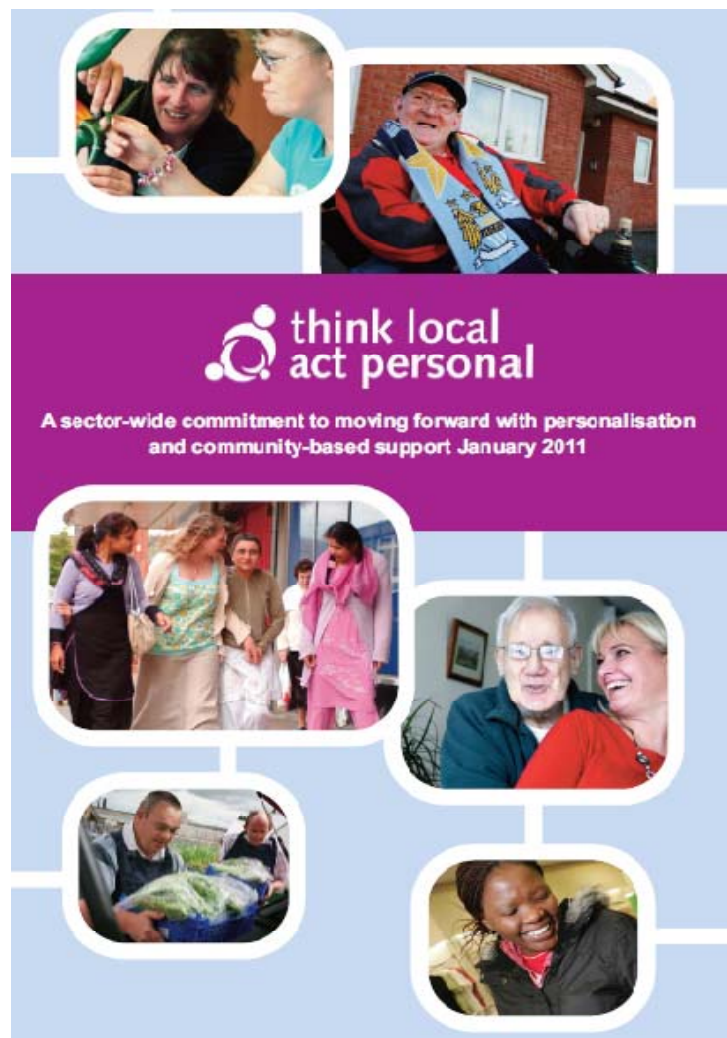


Links to Winterbourne View Programme

5th June 2013

Think Local Act Personal

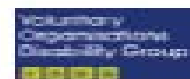
- A national, sector-wide partnership including central and local government, provider organisations and associations, improvement agencies and people with care and support needs
- Focused around moving forward with personalisation and community-based support
- Key delivery partners to the White Paper





Standing Commission on Carers

Transforming Adult Social Care Coproduction Group



The work programme

- ➔ Information & advice
- ➔ Self directed support
- ➔ Building community capacity
- ➔ Market development
- ➔ Coproduction
- ➔ Integration
- ➔ Regional support



Links to Winterbourne? Don't reinvent the wheel!

Towards Excellence in Adult Social Care Programme

A PROGRAMME
Making

 think local
act personal

 think local
act personal

Driving
Adult So

What is Quali

MAKING IT REAL

Marking progress towards
personalised, community
based support.

Partnerships
Outcomes:
Market relations

on behalf of Think Local Act Personal JULY 2012





Department
of Health



Coffee



Department
of Health



Session 4 – Action Planning



Department
of Health



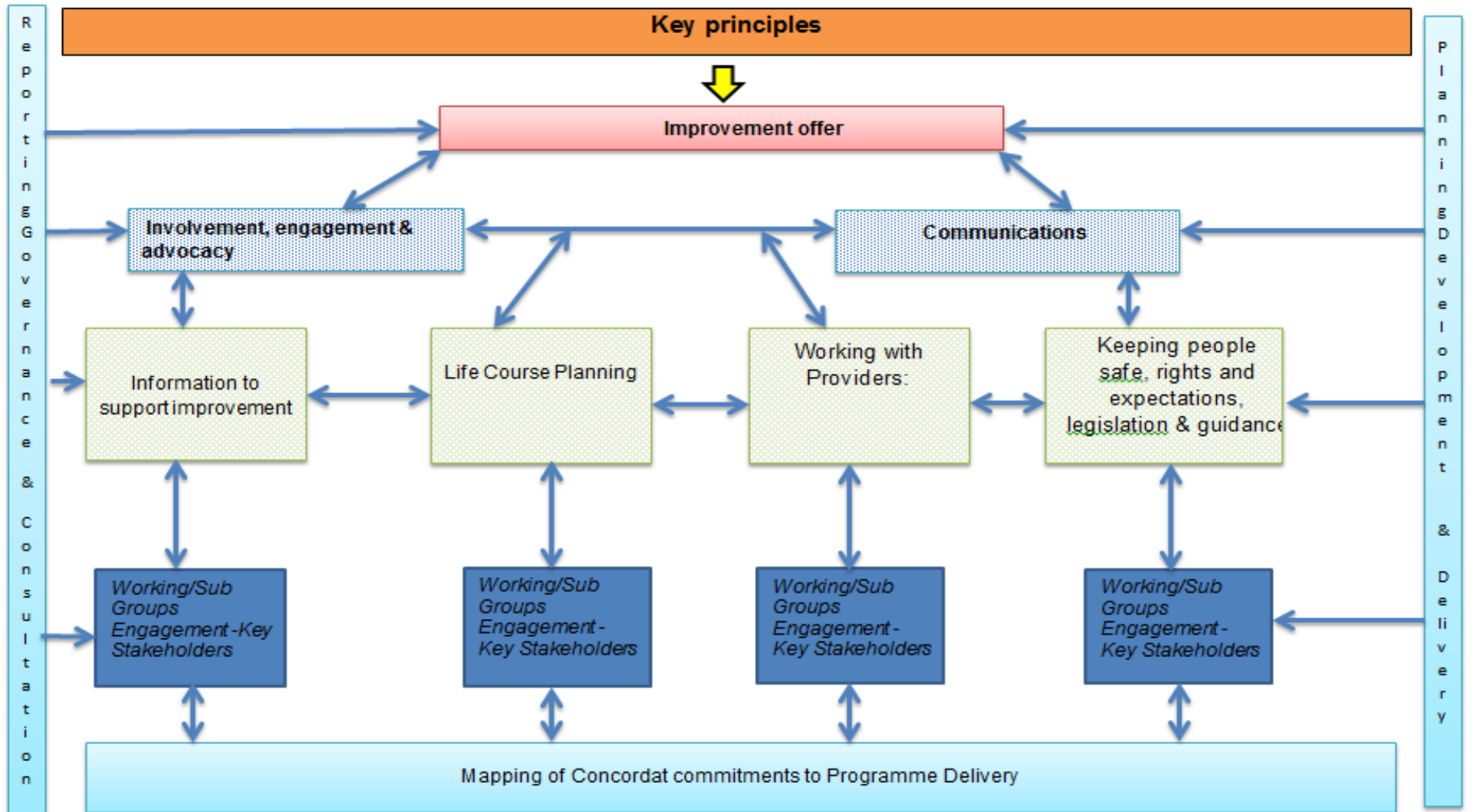
Session 5 – Developing the Winterbourne View Joint Improvement Programme



Department of Health



WINTERBOURNE VIEW IMPROVEMENT PROGRAMME – GOVERNANCE REPORTING & DELIVERY MATRIX





Department
of Health



Summary and Closure – Chris Bull