

Prospect PBS Training Ltd

Contact: Jon Hull/Kerry Turner

Tel: 01726 212955

Fax:

Email: info@prospectpbs.com

Website: www.prospectpbstraining.co.uk

Address: Meadowsmede
Fore Street
Probus
Truro
Cornwall. TR2 4JL

PI System/ Prospect PBS Training Ltd. Individualised PI Model

Geographical Area Covered: British Isles

Who Is Training For?:

Staff, Carers, Teachers, Nurses, Parents who support individuals with Learning Disability, Autism, Aspergers Syndrome, SEBD whose behaviour is described as challenging.

Accredited Courses:

Course Code	Duration	Course Title
PITAS/10031/1	1 day	Initial Orientation Training
PITAS/10031/2	2 day	Practitioner Training
PITAS/10031/2a	5 day	Advanced Practitioner
PITAS/10031/3	10 day	In service Trainer Training
PITAS/10031/4	1 day	Principal Trainer Refresher Training

General Approach to Teaching Physical Interventions:

Prospect PBS provides training and consultancy to a wide range of individuals and services including schools, care homes and parent groups.

We have a person centred approach based around positive behaviour support strategies that train staff to empower and enable the individuals they support.

We believe outstanding services are built on the positive respectful interactions with the people in them; whether they are children in a school or adults in care homes the same principles apply. Positive relationships are a key element to promoting positive behaviour and reducing behaviour that challenges. We know the use of PBS approaches reduce the need for physical interventions. More importantly, the use of PBS improves quality of life and outcomes for all involved.

We teach physical interventions within our wider module for safer interaction as we believe physical interventions should not be taught in isolation without a clear focus on context, environmental impact, staff attitude, approach and service dynamics- we will where possible always support the adapting of current practice to reduce challenging behaviour occurring before we teach physical interventions.

- Support and training should be built around interactions and relationships
- That understanding the individual, their wants needs and desires is the best place to start with any intervention.
- Challenging behaviour should not limit the individuals life
- Safety as a foundation for Life. Life as a framework for Growth.
- Parents, staff and carers all have the right to high quality appropriate training
- Mutual respect and involving the individual in their support plan are the most effective and ethically viable approaches available
- Behaviour is functional- therefore it is an important part of the individual. We must understand what the person is communicating through their behaviour

Prospect PBS is different because we are able to work with services to ensure the approach to PBS is embedded. We recognise the uniqueness of every services and do not approach personal issues with generic training.

- We personalise every aspect of PBS training
- We adapt and deliver packages to meet your needs
- We enable participants to embed PBS into their services
- We work in partnership with the individual whose behaviour challenges (where appropriate)
- We enable services to develop appropriate policy and procedures that work to promote positive outcomes in their specific setting
- We can provide more generalised training to a range of services that require an introduction to PBS
- Many of our referrals come from services that support individuals with complex needs and challenging behaviour. We support any service that shares our common goal of wanting to improve quality of life and promote positive outcomes

Prospect PBS provides training and consultancy across the UK. We currently have principal trainers based in Cornwall, Dorset and Wales.

Accredited Trainers

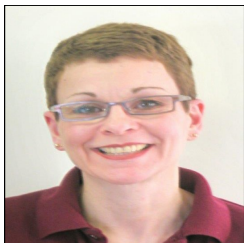
Prospect PBS



John Hull
PITAS/10031/001



Kerry Turner
PITAS/10031/002



Sarah Dunn
PITAS/10031/005

