

# Protecting Rights In a Caring Environment Ltd

**Contact:** Vicky Rogers (Administration and New Enquiries)  
Mike McBride (Director)

**Tel:** 01568 619390

**Fax:**

**Email:** [priceadmin@signisgroup.com](mailto:priceadmin@signisgroup.com)

**Website:** [www.pricetraining.co.uk](http://www.pricetraining.co.uk)

**Address:** Protecting Rights In a Caring Environment Ltd  
Unit 1150, Elliot Court  
Herald Ave  
Coventry Business Park  
Coventry CV5 6UB

**PI System/** P.R.I.C.E. Protecting Rights In A Caring Environment

**Geographical Area Covered:** UK and International

## **Who Is Training For?:**

Practitioners/Organisations working with:-

- Pupils / Children experiencing SEBD/SEMH
- Children with Learning Disabilities
- Children with Autism
- Adults or children with Mental Health Difficulties
- Adults with Learning Disabilities
- Adults with Autism
- Looked After Children in Fostering Services

The programmes have a consistent track record within:

- Mainstream Education settings (Primary & Secondary)
  - Special Schools and PRU's
  - Residential (Children, Young People and Adults)
  - Day care and supportive living settings
  - Fostering
  - NHS (Particularly Dementia/EMI services)
  - Secure Children's Homes
  - Adolescent Mental Health
  - Unpaid Carers, including Parents

### Accredited Courses:

| Course Code    | Duration       | Course Title   |
|----------------|----------------|--|
| PITAS/10023/1  | 1 day          | Defusion and De-escalation (participant)   |
| PITAS/10023/1a | 2 day          | Defusion and De-escalation (participant)   |
| PITAS/10023/2  | 2, 3 and 4 day | Positive Approaches to Challenging Behaviour—adult settings (participant)        |
| PITAS/10023/2a | 2, 3 and 4 day | Positive Approaches to Challenging Behaviour—children settings (participant)     |
| PITAS/10023/2b | 5 day          | Positive Approaches to Challenging Behaviour—Instructor course—children          |
| PITAS/10023/2c | 5 day          | Positive Approaches to Challenging Behaviour—Instructor course—adults            |
| PITAS/10023/2d | 4 day          | Positive Approaches to Challenging Behaviour—Instructor refresher course         |
| PITAS/10023/3  | 2 day          | Positive Approaches to Challenging Behaviour Plus—Instructor—children and adults |
| PITAS/10023/4  | 1 and 2 day    | Positive Approaches to Challenging Behaviour—Foster Care (participant)           |
| PITAS/10023/4a | 4 day          | Positive Approaches to Challenging Behaviour—Foster Care—Instructor              |
| PITAS/10023/4d | 2 day          | Positive Approaches to Challenging Behaviour—Foster Care—Instructor refresher    |

## **General Approach to Teaching Physical Interventions:**

PRICE Training utilises a Positive Behaviour Support approach with an emphasis on Functional Analysis, Proactive and Preventative strategies including Primary & Secondary Prevention. Initially developed under the guidance of the Home Office, and in association with the DOH (Department Of Health), PRICE Training operates from a strong Value Base that supports organisations in promoting opportunities for development and learning whilst reducing levels of physical intervention and risk.

### **Pre-training:**

Audit Tools & Discussion are used to individually customise programmes that are flexible and responsive to your organisational needs. In line with the BILD Code of Practice, we work with Commissioners to ensure a full behavioural audit is completed, which forms an evidence based rationale to support the programme. We are also able to work with services to ensure your Policies & Procedures are compliant with Legislation & Inspection requirements.

### **Training**

Our focus is on developing awareness, understanding, proactive strategies, empathy, self-awareness and the importance of positive relationship building. A large emphasis is placed on De-fusion, De-escalation, consistent behaviour planning (including Individual Behaviour Support Plans), risk assessment and team building. Training can either be arranged on an individual or group participant basis or a train the trainer basis. At the heart of PRICE Training lies the objective of improving quality of life outcomes for vulnerable children and Adults whilst simultaneously empowering staff members with increased confidence levels and maintaining the correct values and culture.

Among the key areas that will enable a service to be working towards their goal of significantly reducing the need for the use of restrictive physical intervention, is that of functional assessment. Once effectively in place, it will give staff members a more informed view of the children or adults they are seeking to support and subsequently lower anxiety levels in both service users and staff members alike.

Physical Intervention Techniques are phased up and down, reflective of need, incorporating low-level, low-arousal, escorting techniques, through to one and two person techniques. All techniques are consistent with the principles of last resort, least intrusive intervention and the use of minimum force. Techniques avoid positions and holds that are associated with elevated risks, do not involve any kind of pain compliance and are consistent with current best guidance and practice.

The teaching methodology is interactive, contemporary (Including the use of video, multi-media, group work, tutor-led sessions as well as reflective and experiential exercises) and is consistent with the principles of adult learning.

Programmes are delivered by Trainers with relevant knowledge, expertise and professional background, including Head Teachers, Qualified Social Workers and Registered Managers with considerable residential care experience.

All of our Instructors have access to our Instructor Portal, which provides them with all the training materials require to deliver our courses.

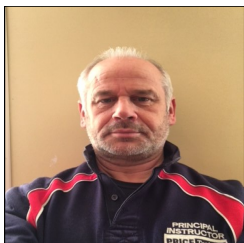
### **Relevant Training Topics :**

PRICE Training offers all course participants and 'In House' Trainers an on-going support Network after successful completion of their course.

- Senior PRICE Trainers are also available to assist in providing an expert opinion on specific issues / Individual Behaviour Support Plans / Behavioural Risk Assessing / incidents and
- Investigations within your organisation on a Consultancy basis

# Accredited Trainers

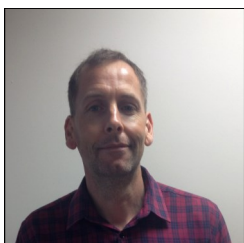
## PRICE Training



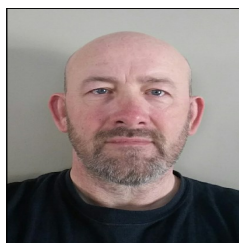
**Colin Matthews**  
**PITAS/10023/001**



**Gareth Wren**  
**PITAS/10023/002**



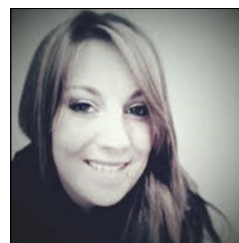
**Ian Taylor**  
**PITAS/10023/004**



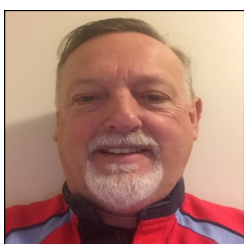
**Lewes Preece**  
**PITAS/10023/007**



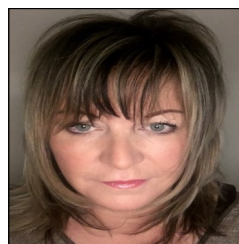
**Mike McBride**  
**PITAS/10023/008**



**Rosanna Danson**  
**PITAS/10023/009**



**Steven Alexander**  
**PITAS/10023/010**



**Alison Tunnah**  
**PITAS/10023/011**

